



2020

ST. CHARLES PARISH DEPARTMENT OF ANIMAL CONTROL BY THE NUMBERS



How they find homes?

Reclaimed By Owner

115 Dogs 18 Cats

Local Adoption Percentage

132 Dogs 80 Cats

National Adoptions

160 Dogs 141 Cats

Total Shelter Intake

525 ↓ 24% decrease from 2019

855 ↓ 30% decrease from 2019

Live Release Rate

87% ↑ 9% increase from 2019

79% ↑ 7% increase from 2019

Length of Stay (Average Days)

8.7 ↓ 58% decrease from 2019

9.6 ↓ 51% decrease from 2019

Length of Stay (Max Days)

141 ↓ 65% decrease from 2019

150 ↓ 79% decrease from 2019



\$81,000

worth of surgeries done in house



280% | 689

increase in fostering

volunteer hours



\$96,000

in grants for spay/neuter, community response, shelter response

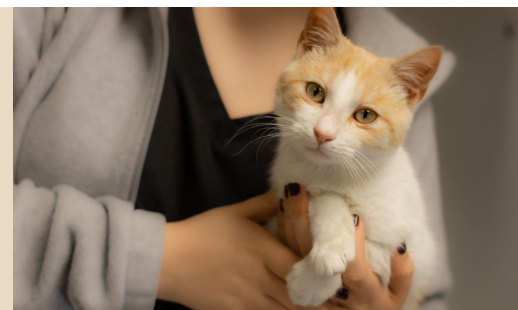


150k lbs

of food donated via Greater Good Charities for Louisiana distribution

360%

decrease in kitten intake since 2016 due to addressing core issues with spay/neuter



scpanimal@stcharlesgov.net



(985) 783-5010



stcharlesparish-la.gov/animalcontrol