

Saint Charles Parish, Louisiana
SPECIAL REPORT

2010



‘PROGRESS *is the activity of today* and the **ASSURANCE** *of tomorrow.*’

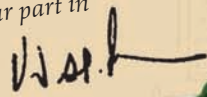
Dear St. Charles Parish Residents,

I'm excited to once again present this progress report on your local government.

This year we'll take a special look at the many construction and building projects completed or underway and discuss government structure and functions

As always, **thank you** on behalf of myself and the **St. Charles Parish Council**, for doing your part in continuing to bridge our communities!

– Ralph Waldo Emerson



CONTENTS

- 03 PARISH GOALS
- 11 GOVERNMENT GUIDE
- 17 PICTURING THE PARISH
- 18 PROJECTS
- 20 BUILDING UPDATE
- 22 FINANCIAL SUMMARY
- 24 CONTACT INFO

Layout by Renee A. Simpson
Photos by Renee A. Simpson, Dwan Pitre, Melanie Worrall, Anne Bates, Kevin Moore, Elliot Madere, Kristen Higon & Bobbi Cullen (cont. on p. 22)

EXPEDITE THE CONSTRUCTION OF A WEST BANK HURRICANE PROTECTION LEVEE.

Parish leaders have officially received a **permit from the U.S. Army Corps of Engineers for Phase II** of the levee, a 2.1-mile stretch to be built south of Willowridge subdivision. The 2011 parish budget includes **\$17 million** for levee work, to include land acquisition, mitigation and more.

In early 2011, the parish council approved **\$1.6 million to mitigate** wetlands damage to be caused by levee construction.

Engineering firms hired in 2008 to perform land and **right-of-way acquisition and modeling** continue to work on such for Phase III, the Ellington Phase, to

be built south of Luling and Boutte. A permit for this phase was applied for in July 2010 and is currently under review.

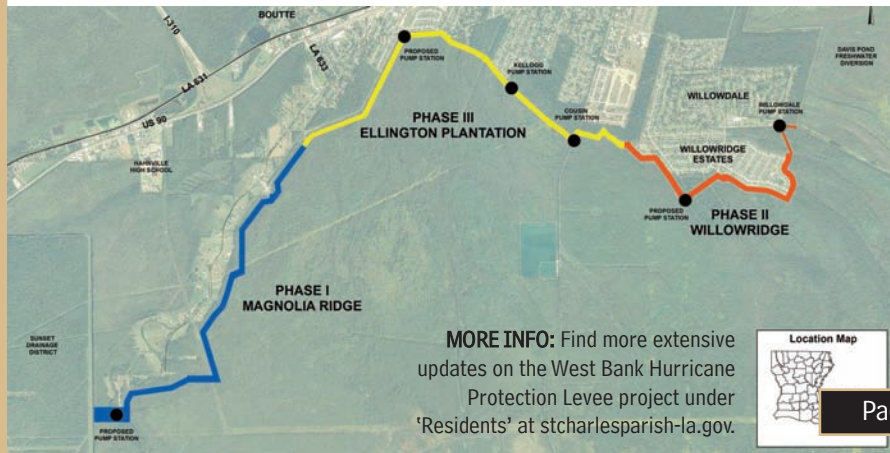
A **new permit application** is being developed to complete work on Phase I, **Magnolia Ridge**, partially constructed south of Boutte.

The parish entered into a cooperative endeavor agreement with **Lafourche Basin Levee District** for continued levee work.

The parish has made it a **priority** to construct a levee that is at or above **FEMA standards** to protect all West Bank citizens from tidal flooding and reduce insurance rates.

2011 STATS

- **\$1.3 million** spent on wetlands mitigation
- **\$17 million** budgeted for levee work



CREATE RESPONSIBLE, ACCESSIBLE AND RESPONSIVE GOVERNMENT THAT HAS SOUND FINANCIAL AND ADMINISTRATIVE PRACTICES.

The St. Charles Parish Public Information Office began production on “**St. Charles Parish Today**,” a monthly talk show for Government Access Channel 6 which covers upcoming events and offers a look inside parish government.

New **Channel 6 management software** makes it simple for viewers to see programming schedules and easier for parish staff to update showtimes.

The parish’s **YouTube channel** reached the 600-video mark in 2010, making it a

comprehensive archive of parish events over the last three and a half years.

The Waterworks Department has completed a transition to **new billing software** that will eventually allow residential and irrigation meters at the same address to be charged on one bill. Payments received through **online bill pay** equaled 18,152 in 2010, about

7.8 percent of total collections.

The **Geographic Information Systems Office** is adding information daily to an electronic mapping system that

includes parish utilities, elevation and zoning data. Residents can make use of the interactive **GIS map** at stcharlesparish-la.gov/gis.

The Finance Department **scanned 561,330 public financial records**, adding to the over 6.8 million documents already stored and indexed on microfilm since 1983.


The parish **website** was named one of the 116 **most transparent** government sites in the nation in 2011, with an A+ rating and subsequent **Sunny Award**. 



CHART:
Parish media

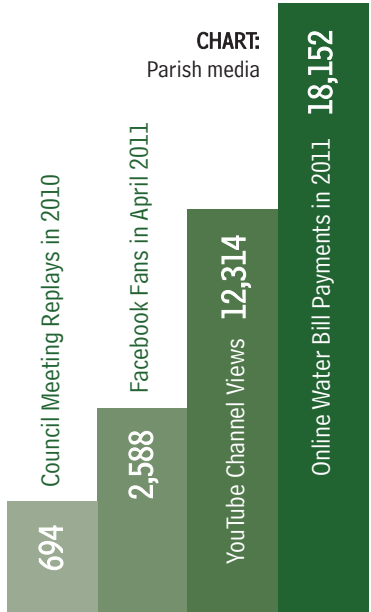


CHART: Approximate miles of canals cleaned in 2010.

7.27 Airline Canal

5 Davis Diversion Canal

4.45 Parish Line Canal

3.33 Prescott Canal



ESTABLISH A WELL-MAINTAINED AND FUTURE-ORIENTED INFRASTRUCTURE WITH EMPHASIS ON EFFECTIVE DRAINAGE.

ABOVE:

Work begins on major improvements to Boutte's Eighty Arpent pump station, which helps drain Old Luling and much of Boutte. The \$6.9 million project will increase capacity by 43 percent. The project is slated for completion in early 2012.

99.5

Public Works' drainage, pump maintenance and road crew's work order completion percentage.

A total of **\$15.4 million in grant funding** from the Federal Emergency Management Agency will help upgrade and improve **drainage infrastructure**. The projects include Eighty Arpent pump station bar screen cleaners and capacity increase (**Boutte**), Engineer's Canal pump station bar screen cleaners (**Norco**), Dianne pump station bar screen cleaners (**St. Rose**), Ormond Boulevard Canal culvert replacement (**Destrehan**), Willowdale box culvert improvements (**Luling**), No. 10 Canal road crossing culvert improvements (**Bayou**

Gauche) and New Sarpy pump station bar screen cleaners (**New Sarpy**).

The 2010 **Road Maintenance Program** has repaired or overlaid **53 local roads** parishwide, or about 12 miles total. Major roadways worked included a large portion of **Willowdale Boulevard** in Luling, **Primrose Drive** in Luling and a lane on **Stanton Hall Drive** in Destrehan as part of the \$1.8 million program. It is funded through a local **property tax millage** and state funds.

(Continued on next page)

\$6.1 Million
Dollars spent on road repair over the last four years.

infrastructure: continued

The parish has completed work on the **Lakewood, Boutte and Paradis pump stations**, installing new bar screen cleaners on all at a combined price of almost \$3

million. The new plant, along with already-completed dual **water line river crossings**, ensures residents have access to clean drinking water 24/7, even in the face of emergencies.

Work also began on upgrades to **high priority sewer lift stations** in the Old Luling area. Six new lift stations have been replaced, and a new station has been installed to handle rerouted flows at a total **contract amount of \$1,510,228**.

Work also began on rehabilitation projects at both the **Hahnville and Destrehan mechanical wastewater treatment plants**, permanently correcting damage from H₂S gas.

A new **sluice gate at the Prescott Canal** controls tidal flows from Lake Pontchartrain before they would cause drainage trouble in **Montz**. Previously, Public Works had to shut down lanes of Airline Highway to shore

up the canal. The parish council approved a **\$594,000 project** to sheet-pile stabilize approximately 600 linear feet of Destrehan's **Dunleith Canal**. More phases are in the works to help fortify this important drainage outlet.

Contractors are installing a new **conspan bridge** under Ormond Boulevard to improve drainage flow to the **Destrehan I pumping station** from 350 cubic feet per second to 1,413 cubic feet per second.

See a full list of capital projects on p. 18. 



PHOTO: A contractor works on the East Bank's new water plant.

million. A FEMA hazard mitigation grant covered most of the cost.

New Sarpy's new 6-million-gallons-per-day **water treatment plant** is at substantial completion at a

CHART:
Drainage maintenance

11,722 Feet of undersized / damaged culverts replaced

62,071 Feet of culverts cleaned

168,118 Feet of ditches cleaned in 2010

ESTABLISH PREDICTABLE, COMPATIBLE LAND USES THROUGH ZONING AND COMPREHENSIVE PLANNING.

The mission of the St. Charles Parish Planning and Zoning Department is to balance the public interest with individual needs in pursuing a quality living and working environment in St. Charles Parish through effective land use management.

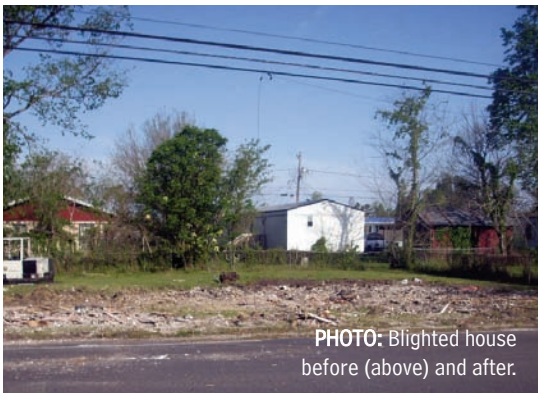


PHOTO: Blighted house before (above) and after.

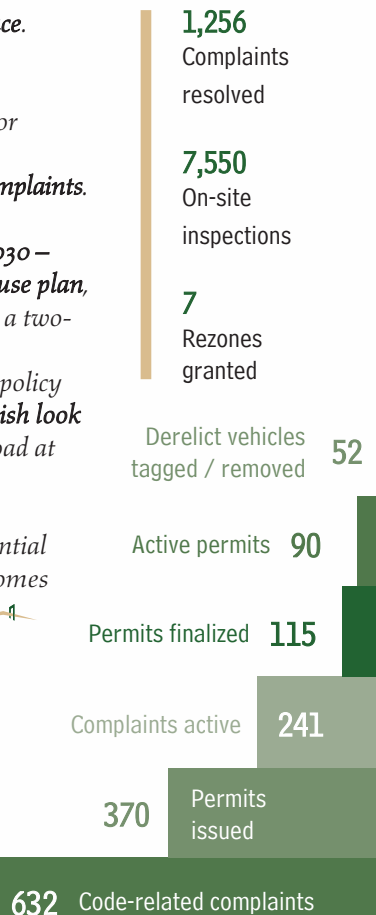
The parish is winning the battle against **blighted housing**. Since January 2010, **59** such homes have been demolished and returned to **greenspace**.

Five **Code Enforcement Officers** investigate planning and zoning complaints and monitor residential and commercial construction for compliance. In 2010, P&Z received **1,497 complaints**.

The parish adopted the new **'St. Charles 2030 – Bridge to the Future'** comprehensive land use plan, the result of 19 public input meetings over a two-year writing process. The plan answers the question through its vision statement and policy guidelines – **"What should St. Charles Parish look like in 20 years?"** It is available for download at the parish website.

Planning and Zoning issued **57** new residential permits, **117** for additions, **50** for mobile homes and **40** for new commercial buildings. **1-1**

STATS & CHART:
2010 Planning and Zoning snapshot includes information on complaints, permits



DEVELOP A COMPREHENSIVE PARKS AND RECREATION PROGRAM THAT PROVIDES AN ARRAY OF SERVICES FOR ALL CITIZENS.

The St. Charles Parish Department of Parks and Recreation continues a program of smart park upgrades and improved maintenance. They include a new playground at **Montz Park**; pavilion, benches and picnic tables at Keller Street Park in **Hahnville**; new fencing and pavilion at **Monsanto Park** in Luling; covered and cemented dugouts at **Des Allemands Park**; and resurfaced tennis courts at the **West Bank Bridge Park** in Luling.

New **software** obtained by the department is making it easier to **schedule** tournament brackets and

keep parents and coaches informed.

Wetland Watchers Park, located at Lake Pontchartrain in Norco, celebrated its **grand opening**, with the addition of eight **pavilions** with **picnic tables**, two **fishing piers**, an **outdoor classroom**, **walking trail** and **playground equipment**.

Luling's new **Rathborne Park**, located at the end of Lakewood Drive, is becoming a premiere facility, with an **0.84-mile walking trail**, **baseball field**, **playground equipment** and more, with additional improvements to come.

The department continues to offer **recreational opportunities for seniors**, including arts and crafts, a fitness program and fishing rodeo.

For more about recreation infrastructure, see page 20.

PROGRAMS

- Youth Baseball
- Adult Softball**
- Adult Basketball
- Youth Softball**
- Youth Basketball
- Boys & Girls
- Youth Football**
- Cheerleading
- Youth Soccer**
- Youth Track
- Special Olympics**
- Summer Camp
- Youth Volleyball**
- Youth Tennis
- Challenger T-Ball & Shooting Stars Basketball**
- Disabled Youth
- Senior Events

PHOTO: Young Trash Bash volunteers check out the new fishing pier at Wetland Watchers Park in Norco.

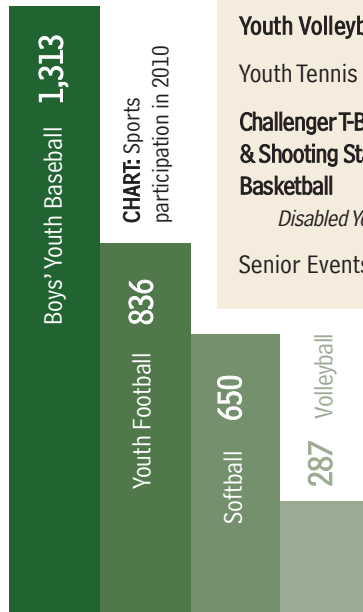
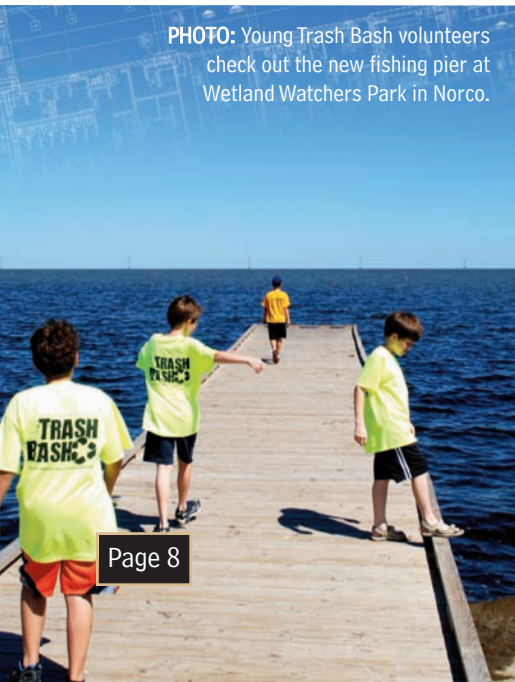


CHART: Business startups in SCP since 2001. Startups rose by 19 percent in 2010



BUILD A DIVERSE ECONOMY WITH THE ABILITY TO SUSTAIN DURING ECONOMIC CHANGES.



PHOTO: Food products at Norco's Edible Enterprises.

6.9%

SCP's average unemployment rate in 2010, almost 3 points below the national average of 9.6.

The River Region, and more specifically St. Charles Parish, was honored in 2010 for its **economic development marketing and positive business climate**. The 'Best of All Worlds' marketing video was recognized with an honorable mention by the **International Economic Development Council**, and **Expansion Solutions magazine** awarded the region its award of excellence in the warehouse / distribution category.

Business expansion moving forward in 2010 / 2011 include:

- FedEx Freight terminal, \$13 million, St. Rose, **60 jobs**.
- Inspectorate America testing lab, \$4.5 million, St. Rose, **20 jobs**.
- MR Pittman Construction Co. headquarters, \$3 million, St. Rose.
- Magnolia Holdings headquarters, \$3 million, St. Rose.
- Valero hydrocracking unit, \$1.2 billion, Norco, **20 permanent jobs and 1,200 construction jobs**.
- Biofuels plant, \$350 million,

Norco, **40-50 permanent jobs and 700 construction jobs**.

- Air Products hydrogen production unit, \$187 million, Luling, **6-8 jobs**.
- IMTT terminal expansion, \$100 million, St. Rose.
- Dow ethylene oxide production facility, \$53 million, Taft.

Norco's **Edible Enterprises Food Technology Center** continues to facilitate food business dreams for local entrepreneurs, with more than 20 tenants manufacturing products available in over 170 stores.

The **River Parishes Business and Career Solutions Center** continues to sponsor **job recruiting events and career-readiness workshops** for job seekers despite budget cuts to the state-funded program. For more information, call **1-866-680-JOBS** or visit stcharlesparish-la.gov/wia. 

GOALS SEVEN

PROMOTE A PARISH THAT IS SAFE, ENVIRONMENTALLY CONSCIOUS AND PROVIDES CULTURAL AND AESTHETIC ENJOYMENTS.



The **Trash Bash** program continues to be a driving force for parish beautification efforts. The spring 2011 event logged a total of **266 volunteers** from community groups and industry, who filled **177.5 garbage bags** with roadside litter and **25 bags** of recyclable material.

Local government is sponsoring more than **10 permanent recycling bin locations** across the parish for citizen use 24/7. To see locations and a list of accepted items, visit stcharlesparish-la.gov.

Approximately **3,500 Christmas trees** were collected and placed in the **Simoneaux Pond** area of **Bayou Gauche** to serve as wake breakers and to build new land. Even though the Louisiana Department of Natural Resources decided to discontinue the wetlands preservation

project, the parish will fund future programs at a cost of about \$35,000 per year.

The Department of Emergency (Continued on page 15)

11,873

EOC action-related phone calls in 2010

108

Emergency alert phone / text messages sent in 2010

3,087

Number of residents assisted with energy bills through LIHEAP program, administered by the SCP Department of Community Services.

FAR LEFT: Ribbon being cut on the West Bank multi-use levee path.

LEFT: An Animal Control employee helps register families with pets during an assisted evacuation drill in 2010.

QUALITY OF LIFE

Median household income in 2009 was **\$56,869**. Average weekly wages were **\$1,080**.

Top employers are **St. Charles Parish Public Schools** and **Dow Chemical**.



*We, the People of the
Parish of St. Charles,
in the State of Louisiana,
in order to secure for
ourselves the benefits and
responsibilities of home rule,
do adopt, under God, this
home rule charter and
plan of government.*



AN OFFICIAL CITIZEN GUIDEBOOK TO

PARISH GOVERNMENT

Saint Charles Parish, Louisiana

SERVICES

GOVERNMENT

LOCAL TAXES

St. Charles Parish operates under a **home rule charter**, which provides for **separate legislative and executive branches of government independent of one another.**

The system was restrictive since parish government could exercise only that authority specifically given them by the **state legislature**. The home rule charter allows much more **flexibility**. The parish has the authority to do anything that is not inconsistent with state law.

St. Charles Parish adopted its home rule charter in 1978, the **second parish to embrace** this form of governance. The conversion to home rule was completed in 1980, when the council and parish president were installed under the new charter.

The council is made up of **nine members**. Seven are elected from districts and **two at-large members** are elected parishwide, with one residing on the East Bank of the Mississippi River and one residing on the West Bank.

The council's principal function is to **enact ordinances or laws**. However, the charter also gives them broad additional powers including **levying taxes, appropriating funds and fixing penalties** for violations of local ordinances.

The daily routine of government is the responsibility of the **parish president**, who heads the **executive**, or administrative branch of parish government.

The president carries out the policies developed by the council and **implements the council's decisions**. He has the responsibility of hiring and firing subject to personnel policies and rules adopted by the council. **Department directors** are appointed by the parish president and must be confirmed by a majority vote of the council.

All programs are handled on a **parishwide basis** by departments staffed by professionals.

The parish home rule charter can be found on the parish website under 'Documents' > 'Parish Council' > 'Pamphlets'. — 11 —

Legislative matters are handled by an elected **nine-member council**, while the elected **parish president** serves as chief executive officer.

The home rule charter was an option offered local governments when Louisiana adopted its new constitution in 1974. It was included in the **state constitution** at the insistence of local officials who felt the need to strengthen local governments throughout the state.

Prior to this, the parish operated under the **policy jury system**. Under this system, jurors were elected from wards, or districts. They operated as both legislators and administrators, handling **day-to-day operations** of the parish.

In ad
the parish

* Lev
charges, li
borrow m
limitation

* Ma
* Req

officers co
departmen
reports sh
president

special dis
* Ma

inquiries i
or special l
of the acco
the purpos

records an
office, age
evidence; a
obey any

conviction
council sh
* Cre

agencies i
charter.

* By
departmen
provide fo
functions

* Ent
within or
performan
other of a

* By
consolidat
may be pr
protection

In addition to having complete legislative authority, the council may:

levy and collect taxes, special assessments, service license charges, fees and other revenues, and money in such a manner and subject to such terms as may be provided by law.

Make **appropriations** for all parish purposes.

Require periodic and **special reports** from all parish departments concerning the affairs of their respective

departments, offices, agencies or special districts, which

shall be **submitted by and through the parish council**

in the case of departments, offices, agencies and special districts subject to his jurisdiction.

Make **investigation** of parish affairs and make reports

into the conduct of any department, office, agency or special district of the parish, including the investigation of accounts, records and transactions of such; and for the purpose of investigation of the

accounts, and transactions of the department, office, agency or special district; and other

any person who fails or refuses to obey the lawful order of the council shall, upon conviction, be punished in such a manner as the council may all fix by **ordinance**.

Create parish departments, offices or agencies in addition to those created by the council.

Repeal or amend any ordinance, **abolish or consolidate** any parish department, office, agency, board or commission or

approve the consolidation and transfer of any of the powers of such.

Enter into **contracts** with other governmental units outside the boundaries of the parish for joint

purpose or performance by one unit on behalf of the other for any authorized function of activity.

By ordinance, establish, merge, reorganize, create and/or abolish **special districts within which**

are provided fire protection, recreation, police, water, streets, drainage, sidewalks, street

lighting, waste and garbage collection and disposal, sewerage and sewerage disposal systems and other similar facilities and services. All parish funds for such

districts shall be **provided by service charges**, special assessments, general tax levies or as

otherwise provided by law, within such districts only.

When acting as the governing body of special districts as provided by the charter, the **parish council shall have the same jurisdiction and powers as when acting as the council.**

* Provide, in manner and in amounts consistent with state law, **penalties for the violation of the charter** and of parish ordinances.

* Provide **budgetary, fiscal and other controls** over all special boards, commissions, agencies, districts or any device having governmental functions which it or its predecessor has created to insure the maximum possible coordination of government at the local level.

* Perform any other **acts consistent with state law** deemed to be for the best interest of the people.

* The council shall have the power of **eminent domain and the right to expropriate property** for public purposes as provided by law. The council shall make fair and just compensation for any properties acquired in the exercise of its powers, duties or functions.

The council in **no way has the right to interfere** with parish employees or daily activities which fall under the power of the parish president.

The parish council is vested with and exercises all legislative power in the parish of St. Charles.

PHOTO: The St. Charles Parish Council meets twice per month in the council chambers, located at the courthouse in Hahnville.



PARISH PRESIDENT

Powers of the executive branch

In accordance with the charter, the parish president is **responsible for carrying out the policies adopted by the parish council** and for the administration, direction and supervision of all parish departments, offices, agencies and special districts, the heads of which are appointed by him or her.

The parish president must see that all laws, provisions of the charter and acts of the council subject to **enforcement** by him or her or offices subject to his direction or supervision are faithfully executed.

In addition to handling the daily affairs of the parish, the **charter mandates** that the parish president:

* Prepare and submit an **annual operating budget** and capital outlay program to the council and shall be responsible for executing the budget and capital program

after adoption by the council.

* Submit to the council and make available to the **public monthly reports on the finances and administrative activities** of the parish. No later than three months following the close of each fiscal year, he shall present the council with a complete financial and operating report on the affairs of the parish for the fiscal year just ended.

* Make such **other reports** as the council may require concerning the operations of parish departments, offices and agencies subject to his direction and supervision.

* Keep the council **fully advised of the financial condition** and the needs of the parish and shall make such recommendations to the council concerning the affairs of the parish as he deems desirable. — — —

The home rule charter established the **Department of Finance, the parish Legal Advisor and the Department of Planning and Zoning**. The charter also provided that the parish council may, by ordinance, establish other parish departments, offices or agencies. Each parish department, office or agency is **administered by an officer** appointed by and subject to the direction and supervision of the parish president. These department heads may be suspended or removed by written order of the president.

Except as specifically provided by the charter, neither the council nor any of its members shall in any manner **dictate the appointment or removal** of any parish administrative officer or employee whom the parish president or any of his subordinates are empowered to appoint, but the council may discuss with the president anything pertaining to the appointment and removal of such officers and employees.

Except for the purpose of **inquiry and investigation**, the council and its members shall deal with parish officers and employees who are subject to the direction and supervision of the parish president **solely through the president**, and neither the council nor its members shall give any orders to any such officer or employee, either publicly or privately. — — —

GOAL SEVEN

quality of life: continued

(Continued from page 10)
Preparedness hosted a mock full-scale **assisted evacuation** drill at the West Bank Bridge Park using more than 50



volunteers from the parish's **Retired and Senior Volunteer Program**. Participants were bused into the park and guided through registration, including **pet registration** and identification of special needs. Parish workers used a **fully-computerized**

registration system, which tracks personal information via scannable arm bands and utilizes drivers licenses to quickly fill in registration forms.

Government Buildings personnel built a display for the bell of the **George Prince Ferry** and delivered it to the **East Regional Library** in Destrehan for display. The bell is an artifact of the 1976 ferry disaster, which claimed 77 lives after a collision on the Mississippi.

The Parish Council **lowered monthly residential garbage pickup rates** in granting a five-year contract to SDT.

Tap water on the West Bank of St. Charles Parish was voted

best tasting in the state of Louisiana by the American Waterworks Association. The distinction comes after **similar honors for East Bank water** the last two years in a row.

Animal Control is taking the **fight against animal cruelty** to the front lines by distributing flyers on animal abuse to water meter readers, school bus drivers and mail delivery personnel.

INVITATION: Norco's **Wetland Watchers Park** celebrated its grand opening with **1,200** in attendance. 

\$39M

\$36 million – Amount of grant funding acquired by St. Charles Parish since January 2008. The funds, used for everything from drainage projects to recreation, allow the parish to complete a larger number of projects without having to raise local taxes.

420
 Pet adoptions
 in 2010

31
 Animal
 cruelty cases
 prosecuted in
 2010

8,705
 Meals served
 in the 2010
 Summer Food
 Service
 Program,
 administered
 by Dept. of
 Community
 Services



PHOTO: Crews deliver the bell of the George Prince Ferry to the East Regional Library.

DEVELOP A WORKPLACE THAT ATTRACTS AND RETAINS COMMITTED, SELF-DIRECTED AND CREATIVE TEAM MEMBERS.

576
Number of civil service and appointed employees at the end of 2010

45
Number of sites maintained by General Government Buildings

PHOTO: SCP employee teams raised thousands for the American Cancer Society's Relay For Life in 2011.

A FEMA grant for \$258,883 will fund the installation of **impact-resistant glass windows** at the St.

Charles Parish courthouse, ensuring the building's **strength** in the face of severe storms and hurricanes. The hazard mitigation grant will **replace windows** on the eastern, southern and western sides of the building and add impact-resistant glass doors to all four entrances, making the building **safer for parish employees** and first responders working storm recovery.

The parish **honored 92 employees** at its 2011 Civil Service Awards / Training Banquet for years of service and attendance. **Kimberly Cheramie** of the Information Technology Office was named outstanding employee of the year.

The West Bank **Public Works Yard** will complete a move to its new location off of **Highway 3160 in Hahnville**, leaving the site of the Luling waterworks facility on

Milling Avenue. The move will allow waterworks to expand its capacity for water storage while

allowing room for a **brand new shop building** and on-site trailer for break room space.

The parish provides training on at least **five safety topics per month** to field personnel in Public Works, Recreation, Government

Buildings and Wastewater.

The Public Information Office began production of a monthly **employee newsletter** distributed with check stubs. Topics include personnel policies, parish news and family news and photos.

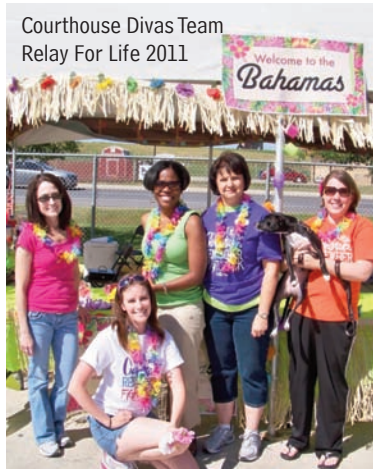
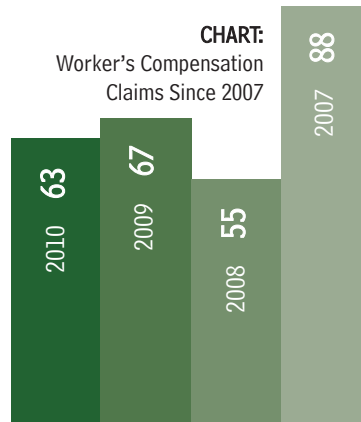


CHART:

Worker's Compensation Claims Since 2007



Picturing THE PARISH

A look at parish infrastructure and operational statistics

959

Average number of phone calls answered weekly by the council / parish president's office



23%

Amount of calls seeking other phone numbers. (Most numbers can be found in the St. Charles Parish Public Information Bulletin)

250,000

Approximate number of water meters read yearly by St. Charles Parish Waterworks



DRAINAGE & FLOOD PROTECTION

- 50** Pumping stations parishwide
- 3.5** Million gallons per minute pumping capacity
- 85.71** Miles of canals maintained
- 4,200** Feet of HESCO Baskets owned
- 4,500** Feet of flood control tubes



WATER & WASTEWATER ASSETS

- 312** Lift stations
- 2** Mechanical sewer plants
- 1** Oxidation pond
- 314+** Miles of sewer lines
- 3.1** Billion gallons drinking water treated yearly
- 2,400** Fire hydrants

Public Works - 311

Administration - 33

Animal Control - 23

Recreation - 63

Wastewater - 54

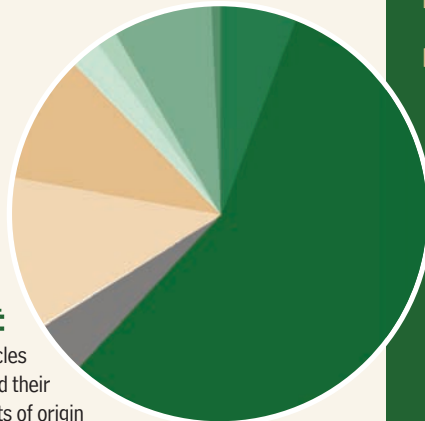
Planning & Zoning - 13

WIA - 9

Waterworks - 43

Community Services - 4

Risk Management - 1



PIE CHART:

St. Charles Parish vehicles and equipment and their departments of origin

2010 CENSUS

The following are population statistics for local communities:

AMA: 1,316

BAYOU GAUCHE: 2,071

BOUTTE: 3,075

DES ALLEMANDS: 2,046

DESTREHAN: 11,458

HAHNVILLE: 3,313

KILLONA: 1,302

LULING: 12,127

MONTZ: 1,937

NEW SARPY: 1,541

NORCO: 3,074

PARADIS: 1,298

ST. ROSE: 8,122

TAFT: 100

ST. CHARLES PARISH TOTAL: 52,780



Charting THE COURSE

An updated look at
infrastructure projects
in St. Charles Parish

UNDER CONSTRUCTION

PS = PUMP STATION | WB = WEST BANK | EB = EAST BANK | WWTP = WASTEWATER TREATMENT PLANT

PROJECT NAME	DISTRICT	FINAL COST	GRANT FUNDING
Eighty Arpent Pump Station Upgrade	1	\$2,970,000	\$2,967,030
Eighty Arpent PS Auto Bar Screen Cleaners	1	\$4,110,000	\$4,000,900
Ormond Boulevard Culvert Replacement	3	\$2,187,218	\$2,187,211
Engineer's Canal PS Auto Bar Screen Cleaners	6	\$1,607,426	\$1,897,934
Dianne PS Auto Bar Screen Cleaners	5	\$653,900	\$603,900
New Sarpy PS Auto Bar Screen Cleaners	6	\$1,741,991	\$1,640,000
Hahnville WWTP Rehab of Coatings	1, 2, 4, 7	\$397,715	Loan \$825,000
Destrehan WWTP Rehab Phase II and IV	3, 5, 6, 1	\$1,070,000	Loan \$1,290,000
Hahnville WWTP Rehab Phases I-IV	1, 2, 4, 7	\$1,347,000	Loan \$1,885,000
High Priority Lift Station Upgrades (6)	2, 7	\$1,510,228	Loan \$2,000,000
Coronado Park PS No. 2 Upgrade	7	\$796,660	-
New Sarpy Water Plant Addition	All	\$28,886,515	-
Hwy. 631 Cast Iron Water Line Replacement	4	\$642,610	\$675,950

COMPLETED IN 2010 - 2011 *To see more years, visit stcharlesparish-la.gov.*

Maryland Drive Conspan Bridge Crossing	7	\$455,022	-
Courthouse Emergency Generator	All	\$992,200	\$358,228
Beaupre / Lakewood Sewer Improvements	2, 7	\$827,975	-

ABOVE: Contractors work on the Ormond Boulevard Culvert Replacement Project in Destrehan.

<i>Cousins PS Auto Bar Screen Cleaner and Deck</i>	2, 7	\$3,528,286	\$3,521,819
<i>Paradis PS Auto Bar Screen Cleaner and Deck</i>	4	\$910,513	\$750,000
<i>Pump Replace / Cover Install New Sarpy PS</i>	6	\$247,300	-
<i>Schexnaydre PS Auto Bar Screen Cleaner / Deck</i>	3,6	\$2,163,567	\$869,151
<i>2009 Road Maintenance</i>	All	\$973,569	-
<i>Thoroughbred Lane Culvert Replacement</i>	6	\$259,865	-
<i>Replace Natural Gas Engines – Destrehan I PS</i>	3	\$796,660	-
<i>Dunleith Canal Sheetpile Stabilization Ph. 1</i>	3	\$900,000	-
<i>Michael Drive Culvert Replacement</i>	4	\$179,496	-
<i>Acorn & Sharon Street Sewer Improvements</i>	4	\$479,348	\$479,348
<i>WB Bike Path, Elm Street to Davis Drive</i>	All	\$1,662,294	\$1,662,294
<i>WB Bike Path, Davis Drive to Davis Diversion</i>	All	\$165,177	\$141,749
<i>EB Bike Path, Ormond Blvd. to Harding St.</i>	All	\$431,064	\$406,900
<i>Lakewood PS Auto Bar Screen Cleaners</i>	7	\$1,230,837	\$1,230,837
<i>Public Works / Wastewater Office Relocation</i>	All	\$557,665	-
<i>Boutte PS Upgrade</i>	1	\$810,453	-
<i>Gates Installed – Hwy. 61 at Prescott PS</i>	6	\$265,000	-
<i>2010 Road Maintenance</i>	All	\$1,899,932	-

IN FINAL DESIGN PHASE

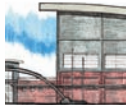
<i>Coronado Park Drainage Improvements and PS</i>	7	\$1,206,540	Application Submitted
<i>Willowdale Box Culverts</i>	2	\$549,275	\$549,275
<i>Primrose Canal Crossing Improvements</i>	7	\$1,381,050	\$1,137,029
<i>No. 10 Canal Crossing Improvements</i>	4	\$1,600,000	\$1,600,000
<i>EB Bike Path, Harding to Apple Street</i>	All	\$287,000	\$287,000
<i>EB Bike Path, Apple Street to Spillway</i>	All	\$243,900	\$231,700
<i>Sidewalks on Fifth St. in Norco</i>	6	\$326,328	\$250,000
<i>WB Bike Path Davis Div. to Jeff Parish</i>	All	\$928,100	\$881,700
<i>KCS Canal Improvements, Montz</i>	6	\$770,000	-
<i>2011 Road Maintenance</i>	All	\$1,400,000	-

Coming to FRUITITION

PHOTOS: Hahnville's new Office of Motor Vehicles is seen in a pre-construction rendering as parish leaders break ground on the project in October 2010.



In 2010, parish leaders revealed plans for 10 needed civic building projects. **HERE'S A FULL UPDATE ON THE PROGRESS**



PARISH COMMUNITY

CENTER – This much-needed, approximately 27,000-square-foot facility would not only

provide the first parish-owned gym space, it would also perform important functions, such as providing an **air-conditioned space to stage assisted evacuations**. Other amenities will include a full-service commercial kitchen, public meeting space and office space for parish departments which heavily serve the public, including **Recreation, RSVP and Community Services**. The facility will also be built to withstand 130 mph winds, which means it may be used as a storm shelter in some instances. The space will **accommodate 1,000**

spectators and about 300 parking spaces. Funding will come from a \$4.8 million Hurricane Gustav / Ike Disaster Recovery Block Grant. Final design plans are nearing completion, and the project is anticipated to be **advertised for bid in 2011**. The building will be located on Judge Edward Dufresne Parkway in Luling.



EMERGENCY OPERATIONS

CENTER – The parish intends to build an approximately 13,000-square-foot EOC

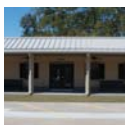
building across the street from the courthouse in Hahnville. The new facility will replace the **current cramped, outdated** basement space the EOC currently occupies, with room to

house first responders and emergency personnel. The building plans and accompanying documents are **being reviewed** by regulatory agencies such as Planning and Zoning, Public Works, Wastewater, State Fire Marshal and the Department of Health. The project will then be ready for any **necessary revisions to be presented for bid**. Funding for the \$5.1 million facility comes, in part, from a \$750,000 federal grant.



WELCOME SIGNS – Nine new welcome signs have been

erected at parish entry points along state highways 3127, 18, 48 and 61. The **attractive green and white signs** reflect the new parish logo and lettering. Two larger signs with landscaping to be placed at the East and West Bank Bridge Parks are currently awaiting DOTD study and approval.



OFFICE OF MOTOR VEHICLES –

Residents now have **ample waiting area** when they need to go for a license renewal. The 1,625-square-foot, \$325,288 new Office of Motor Vehicles was funded in part by a Louisiana Local Government Assistance Program grant in the amount of \$151,000. The move will allow the courthouse to beef up its security by **eliminating foot traffic** through the building's back doors. The new DMV office opened its doors in April 2011.



ANIMAL SHELTER – Parish officials **broke ground** on a much-needed new animal shelter in June 2011. The 8,800-square-foot, \$1.5

million facility will be finished by the end of the year. With **45 dog runs and 60 cat cages** and the ability to better quarantine pets, the shelter will provide better housing for healthier adoptable animals. It will be located in the Dufresne

Business Park at **921 Rue La Cannes, Luling.**



RECORDS STORAGE BUILDING –

A new records storage building now stands directly to the north of the new Office of Motor Vehicles office in Hahnville. The **climate-controlled, \$447,000 building** has room for vehicles to drive in to deliver

documents and room to expand via mezzanine. The facility is **currently being used** by the Clerk of Court, parish government and other agencies.



OLD EAST BANK LIBRARY RENOVATION –

Completed in early 2011, the old East Regional Library in Destrehan is **now home to office space for Public Works and Wastewater** thanks to a \$500,000 renovation, which moved these departments from former space in trailers and modular buildings.



COURTHOUSE THIRD FLOOR RENOVATION –

With the old **third-floor jail having been demolished**, this \$4 million project will create more office space for parish government. Offices in the new space will **(Continued on next page)**

Saint Charles Parish Unaudited 2010 FINANCIAL SUMMARY

REVENUES

General Fund*	\$22,114,414
Budgeted	\$21,957,017
Roads and Drainage**	\$26,717,824
Budgeted	\$21,971,481
Recreation***	\$3,422,445
Budgeted	\$3,366,019
Wastewater^	\$7,306,322
Budgeted	\$10,618,260
Waterworks^	\$11,246,679
Budgeted	\$11,755,762
Solid Waste^	\$4,000,052
Budgeted	\$4,107,800

EXPENDITURES

General Fund	\$21,058,422
Budgeted	\$23,910,603

Roads and Drainage	\$30,609,237
Budgeted	\$36,167,168
Recreation	\$4,188,475
Budgeted	\$4,468,335
Wastewater	\$11,199,581
Budgeted	\$13,165,932
Waterworks	\$10,186,293
Budgeted	\$12,032,848
Solid Waste	\$3,750,725
Budgeted	\$4,332,110

GENERAL FUND EXPENDITURES

Legislative

Parish Council	\$1,030,099
Ordinance and Proceedings	\$33,021
Public Information	\$248,478
Police Jury Association	\$40,097

10 PROJECTS (continued)

include parish administration, council staff, finance, personnel and procurement.



PUBLIC WORKS WEST BANK YARD RELOCATION –

The Parish Council in July 2010 approved a **land purchase** of about seven acres in the Highway 3160 area of Hahnville to move the Public Works **equipment laydown yard** and locate a shop and a few offices. The shop building will be complete by the end of 2011, and some equipment has already been moved to the site.



NEW PUBLIC BOAT LAUNCHES –

Land acquisition continues to be the hurdle for a planned **public boat launch project** along Highway 90 near the Davis Diversion. With design already underway, the \$1.5 million project is otherwise shovel-ready. Plans include **pavilions, restrooms and more** to attract visitors to the parish's lush waterways and local businesses. Another area of interest remains a donated tract of land in the Des Allemands area. The parish is seeking grant funding for both projects. 

Judicial

District Court	\$ 1,144,567
Grand Jury	\$ 11,296
District Attorney	\$1,564,455
Ward Courts	\$118,069

Executive

Parish President	\$442,256
------------------	-----------

Elections

Registrar of Voters	\$85,420
Elections	\$592

Financial and Administration

Finance	\$957,410
Purchasing	\$601,069
Personnel	\$422,712
Legal	\$ 295,124
Taxation – Collector	\$170,398

Other General Administration

Planning and Zoning	\$1,178,429
Coastal Zone Management	\$803,907
ICC Building Codes	\$483,675
Data Processing	\$872,656
Research and Investigations	\$58,800
Cable TV	\$30,352
General Government Buildings	\$3,254,251
Retirement System Contribution	\$112,868
Retired Employees Insurance	\$46,213
Risk Management	\$326,739
Grants Administration	\$167,074

Public Safety

Sheriff	\$1,632,859
Juvenile	\$113,759
Juvenile Acct. Incentive Block Grant	\$14,700

Emergency Preparedness	\$352,444
Emergency Preparedness Subsidiary	\$365,189
EOC 24-Hour Coverage	\$401,277
Motor Vehicle	\$31,830

Public Works

Drainage	\$298,218
----------	-----------

Health and Welfare

Coroner	\$215,668
Animal Control	\$525,032
Job One	\$46,662
Health and Safety Rehabilitation	\$19,340
Community Action	\$403,902
Energy Assistance	\$496,326
Summer Feeding Program	\$78,699
FEMA	\$10,000
EITC Outreach	\$702
ARRA – Weatherization	\$143,598
ARRA – CSBG Program Activities	\$32,370
ARRA – CSBG Direct Activities	\$184,462
CSBG – Sub Grant	\$3,366
CSBG – Administration	\$18,093
CSBG – Program Support	\$150,913
HOME Program	\$122,183

Economic Development and Assistance

Parish Farm Agent	\$79,223
Economic Development	\$754,859
Tourist Information Center	\$50,582
Veterans Service Officer	\$7,284
Public Housing	\$3,120

Debt Service

Fiscal Charges	\$1,735
----------------	---------

Total General Fund Expenditures	\$21,058,422
--	---------------------

*** SOURCE: AD VALOREM TAX, GRANTS, FEES | < SOURCE: USER FEES



ELECTED OFFICIALS

V.J. St. Pierre Jr., Parish President
Carolyn K. Schexnaydre, Council At-Large Div. A
Terry Authement, Council At-Large Div. B
Billy Raymond Sr., Council District I
Shelley M. Tastet, Council District II
Wendy Benedetto, Council District III
Paul J. Hogan, PE, Council District IV
Larry Cochran, Council District V
Marcus M. Lambert, Council District VI
Dennis Nuss, Council District VII

STAY INFORMED

Main Line: (985) 783-5000
Emergency Operations Center: (985) 783-5050
Website: www.stcharlesparish-la.gov
Government Access Channel: Cox Cable 6
Emergency Radio: 1370 AM
Twitter: twitter.com/stcharlesgov
Facebook: facebook.com/stcharlesgov
YouTube: youtube.com/stcharlesgov
Vimeo: vimeo.com/stcharlesgov
Information Line: 1-888-SCP-9EOC

This public document was published at a total cost of \$0.32 per copy, not including postage. Twenty-four thousand copies of this document were published in this first printing at a cost of \$7,992.18. This document was produced by the St. Charles Parish Office of Public Information to inform citizens of government affairs and promote economic development efforts.

To view the full text of all parish department annual reports from 2010, be sure to visit scpspecialreport.com.

For more information about this report, e-mail publicinfo@stcharlesgov.net.



The mission of St. Charles Parish government is to provide high quality, efficient services to sustain and enhance the quality of life for all residents.

POSTAL PATRON

Prst Std U.S. Postage
PAID
Hahnville, La. Permit #2