

HURRICANE WATCH OR WARNING?

A WATCH MEANS IMPACTS ARE POSSIBLE

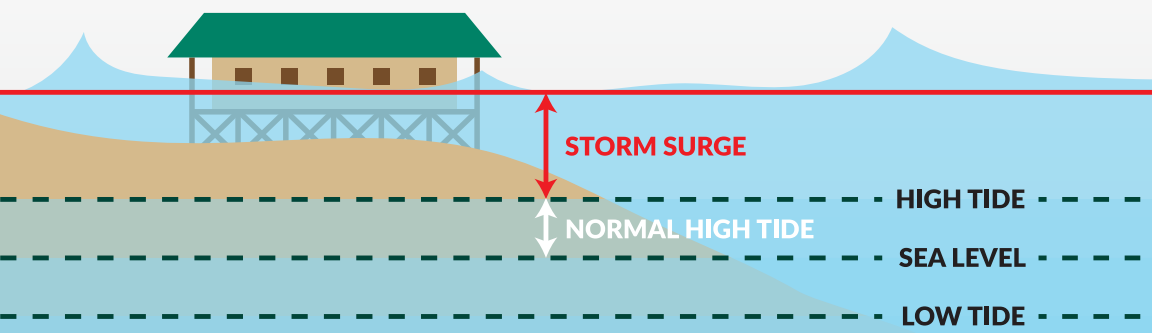
Watches are issued 48 hours prior to anticipated tropical storm force winds. Pay attention to local officials and prepare your family and pets for a possible evacuation. Prepare your home for high winds.

A WARNING MEANS IMPACTS ARE EXPECTED

Warnings are issued 36 hours prior to anticipated tropical storm force winds. Evacuate your family and pets if told to do so.

STORM SURGE WATCH AND WARNING

A Storm Surge Watch means the possibility of life-threatening inundation generally within 48 hours. Storm Surge Warning means the danger of life-threatening inundation generally within 36 hours. Flooding can range from minor to heights above 20 feet in some circumstances.



SPECIAL NEEDS

If you require assistance evacuating, contact the St. Charles Parish Emergency Operations Center immediately at (985) 783-5050.

BEFORE THE STORM



- Know your primary and secondary evacuation destination and how to get there.
- Have your disaster supply kit ready.
- Prepare important documents & plan your finances.



- Sign-up to receive texts, emails or phone calls from St. Charles Parish.
- Visit www.SCPemergencyalerts.com or text ALERTS to 888777.

MEDICAL NEEDS

If you are prescribed a medication that you must take daily, please be sure to have enough medication to last one month. In the event of a possible evacuation, consult with your physician on how to obtain your medicine if you have to fill a prescription while out of state.

IF AN EVACUATION IS NOT REQUIRED

- Check your disaster supply kit.
- Clear your yard of potential flying debris, including lawn furniture.
- Protect windows and glass doors with plywood or shutters.
- Secure boats.
- Clear ditches and catch basins of debris.

DURING THE STORM

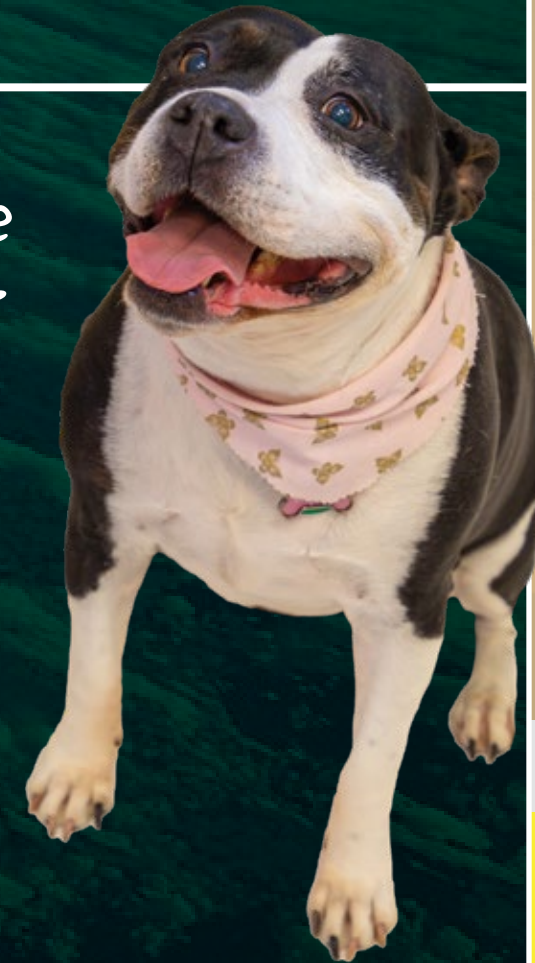
- Stay away from windows.
- If you lose power, turn off major appliances to reduce damage.
- If flooding threatens your home, turn off electricity at the main breakers.
- Limit phone use to emergency situations.
- Stay tuned for advisories about tap water and sewer usage.

FIRST 72 are on YOU

In a disaster, residents could be without essential services such as electricity, water and sewerage for an extended period of time. You should be prepared and have a **3-DAY MINIMUM** supply of the following items:



Make sure to Have A Plan for Your pets



- Do not leave animals behind.
- Plan to bring food, water, medications, current rabies vaccination, current vet records, tags, collars, leashes and carriers.
- For more information, contact the St. Charles Parish Animal Shelter at (985) 783-5010 or visit www.stcharlesparish.gov/animalcontrol.

AFTER THE STORM

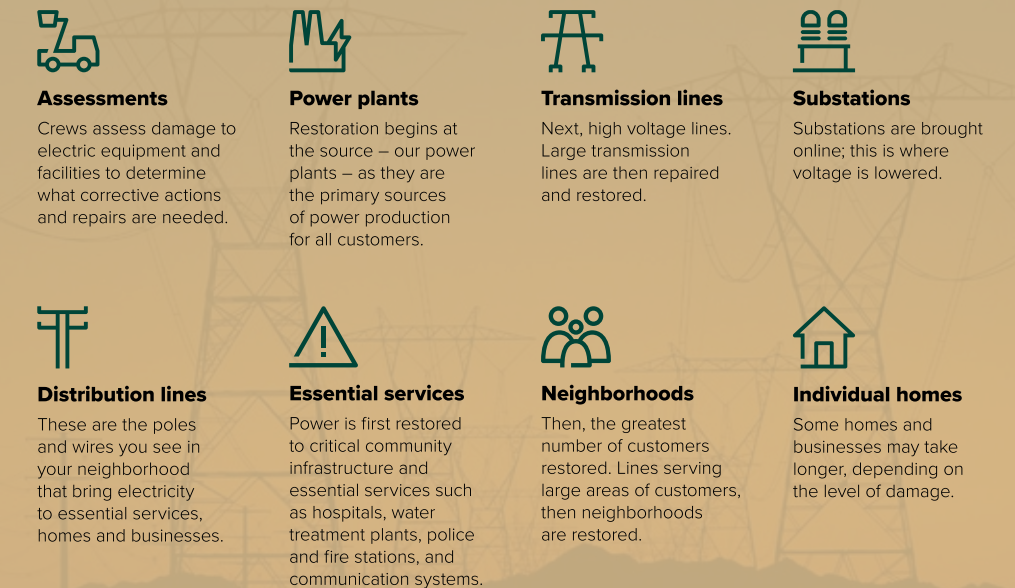
RE-ENTRY

- St. Charles Parish uses an open re-entry approach. When officials say it is safe to return home, residents and business owners are allowed to return with no pass or permit required. If a storm has caused significant damage, it may be necessary to restrict access to essential personnel such as first responders and clean-up crews only.

POWER LINE SAFETY

- Report downed lines immediately to Entergy at 1-800-ENTERGY or call the EOC at (985) 783-5050. For safety tips and information visit www.entergystormcenter.com.

The restoration process is done in an orderly, deliberate manner



A message from Entergy Corporation © 2022 Entergy Services, LLC. All Rights Reserved.

HOW LONG CAN YOU EXPECT TO BE WITHOUT POWER?

UP TO 95 MPH	96-110 MPH	111-129 MPH	130-156 MPH	157 MPH +
7 DAYS	10 DAYS	14 DAYS	21 DAYS	+21 DAYS



EVACUATION INFORMATION

If the parish calls for a mandatory evacuation, both sides of the river will be asked to evacuate at the same time. According to the state contraflow plan, once contraflow has started you will not be able to access I-10 from I-310. St. Charles Parish will evacuate 40 hours prior to the onset of tropical storm force winds.

MANDATORY EVACUATIONS

- Listen to officials. If an evacuation is required, a dangerous threat to life is likely.
- Shut off electricity at the main source and lock up.
- Fuel and service family vehicles.
- Be sure to leave early before contraflow begins.
- Take along needed items in your disaster supply kit.
- Know where you are going.

ASSISTED EVACUATION

- Use of this program should be a last option. Residents should first work with neighbors, family, friends and social networks to secure transportation out of the parish in the event of a mandatory evacuation.
- Evacuees will be staged at the West Bank Bridge Park in Luling and transported to the parish's shelter site outside of the storm surge area.



Do not place debris **near or on trees, poles or other structures.** This includes fire hydrants and meters.

Debris should be placed curbside & not block roadway.

When bagging debris, CLEAR trash bags are recommended.

PLEASE SEPARATE DEBRIS INTO THE BELOW CATEGORIES:



VEGETATIVE DEBRIS
Tree branches, leaves, logs, plants



HAZARDOUS WASTE
Oil, batteries, pesticides, paint, cleaning supplies, compressed gas



ELECTRONICS
Televisions, computers, stereos, phones



CONSTRUCTION DEBRIS
Building materials, drywall, lumber, carpet, furniture, plumbing



LARGE APPLIANCES
Refrigerators, washers/dryers, air conditioners, stoves, water heaters, dishwashers
(Do not leave doors unsealed or unsecured)

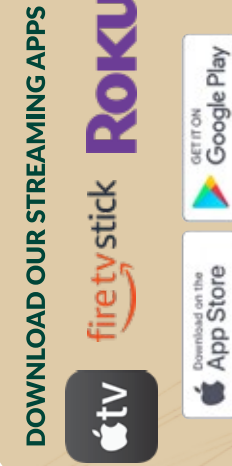
IMPORTANT CONTACTS

AT&T U-Verse: 1-800-288-2020 | www.att.com
 ATMOS Energy: 1-888-286-6700 | www.atmosenergy.com
 Contract Monitor: 985-331-8604
 Garbage, street lighting, mosquito control
 Cox Cable: 504-304-8444 | www.cox.com
 Entergy: 1-800-ENTERGY | www.entropy.com
 Community Services: 985-764-7944
 St. Charles Hospital: 985-785-6242 | www.ochsner.org
 Flood Insurance: 1-888-379-9531 | www.floodsmart.gov
 La. State Police: 1-800-469-4828 | www.lsp.org
 United Way of SC: 985-331-9063 | www.uwaysc.org
 Red Cross: 1-866-GET-INFO | www.redcross.org
 VIA Link Assistance: 211
 For an Emergency
 Call 911
 Emergency Operations Center (EOC)
 (985) 783-5050
 Parish President and Council
 (985) 783-5000
 SCP Emergency Information Line
 1-888-SCP-9E0C
 Website
www.stcharlesparish.gov
 LA Emergency Blog
www.emergency.louisiana.gov
 Television
 SCP-TV is available to Cox subscribers as Channel 6 and U-Verse subscribers as Channel 99.

STAY IN TOUCH



SIGN UP TODAY TO RECEIVE TEXTS, EMAILS OR PHONE CALLS FROM ST. CHARLES PARISH.
SCP.EMERGENCYALERTS.COM
 OR TEXT SCPALERTS TO 888777



DOWNLOAD OUR STREAMING APPS

15045 River Road, P.O. Box 302
 Hahnville, LA 70057 | (985) 783-5000
 @stcharlesgov

HURRICANE PREPAREDNESS GUIDE 2024

